



TE RANGI ĀNIWANIWA KURA PĀNUI

28 TĪKAKA MUTURANGI - 16 URU WHENUA 2025



TAKU KŌPERE E ĀNIWANIWA I TE RANGI, TĀWHANA KAU ANA I RUNGA I NGĀ MARAMARA O MURIWHENUA. WHĀIA TE TINO RANGATIRATANGA ME TE MANA MOTUHAKE

◀ Kia ora e te whānau,

Ko Helix te pūnaha whakahaere ākonga hou. Kua whakakapi i a Edge. Tīkina te taupānga "Helix SMS" i te Toa Taupānga, i te Toa Play rāini. Whakauru mā tō imēra me tō kupu huna, ā, mēnā ko tō wā tuatahi, tīpakohia te kōwhiringa 'Reset Helix password'. Ka taea te tiro i ngā kōrero, e hāngai ana ki te matangaro, ngā pūrongo, me ngā kaupapa e hangai ana ki tō tamaiti.



App Store



Google Play



HE KŌRERO NĀ TE TUMUAKI



Ko Te Rangi Āniwaniwa te maunga
Ko Rangaunu te moana
Taku kopere e āniwaniwa i te rangi,
tawhana kau ana i runga i ngā maramara a Muriwhenua.
Ko Kahukura e āniwaniwa i te rangi,
tūtuki noa ki ngā tai māpunapuna o Rangaunu.
Ko Te Rangi Āniwaniwa te Kura nei,
hei whakanuia,
Whakahua ngā tūhonohonotanga katoa
mai i a Ranginui rāua ko Papatuanuku,
tae noa atu ki a tātou ngā tangata



E ngā aka o Te Aho Matua, e ngā ringakaha o Muriwhenua, e ngā waewae tutuki o tō tātou kaupapa rangatira o Te Rangi Āniwaniwa, tēnei rā te mihi!

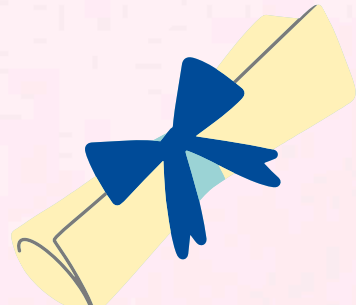
Kei ngā mate tuatinitini o te wā, koutou kua whiti atu ki tua o Rēhua, haere, haere atu rā koutou.

Tauārai te pō, titoko te ao marama, tēnā tātou katoa.
Nau mai, hoki mai, kake mai kia ruruku ki te puna o te wānanga.

NGĀ WHĀRANGI

- 1 TUMUAKI
- 2 WHĀNAU
- 3 KURA TEINA
- 4 KURA TAKAWAENGA
- 5 WHAREKURA
- 6 WĀNANGA
- 7 TE PUNA WAI-ORA

E tuku mihi ana ki a
Whaea Maryanne.
kua whiwhi ia i tana
"Post Grad Diploma in
Hōaka Pounamu"



ACACIA FETUAO FA'AVAE
HE RAUKURA, HE TAMĀHINE, HE MOKOPUNA, HE MĀMĀ, HE
KAIAKO, HE KAIHAKA, MŌ TE HEMO TONU ATU!
POST GRADUATE DIPLOMA IN SECONDARY TEACHING



"Studied hard,
Worked harder,
Mothered and
Partnered
the hardest!"



TE RANGI ĀNIWANIWA KURA TEINA



28 TĪKAKA MUTURANGI - 16 URU WĒHĒUA 2025

NGĀ WIKI	Ngā Rā Matua - Wāhanga 2
1	Rāhina: 28/04 Rā Tuatahi Rāhina: 28/04 Hangarau Tau 7/8 Rāpare: 01/05 Haerenga ki Te Aurere Tau 5-8
2	Rātū: 06/05 Wai Kohu Waka Ama ki Kohukohu Rātū: 07/04 Haerenga ki Te Aurere, Tau 1-4 Rāapa: 07/05 Te Rangi Āniwaniwa Hui Whānau 5PM Rāpare: 08/05 Ngā Māhuri Kapa Haka 9:30am-12:30pm Rāmere: 09/05 Rā Kaiako - Kura Teina: Te Reo Matatini
3	Rāhina: 12/05 Hangarau Tau 7/8 Rāapa: 14/05 Immunisation Tau 7/8
4	Rāpare: 22/05 Ngā Māhuri Kapa Haka
5	Rāhina: 26/05 Hangarau Tau 7/8 Rāapa: 28/05 WEETBIX TRY ki Te Ahu KT Katoa Rāpare: 29/05 Ngā Māhuri Kapa Haka Rāmere: 30/05 Uiui Mātua Kura Teina 12pm
6	Rāhina: 02/06 Rā Hararei - Huritau o King Charles Rāpare: 05/06 Ngā Māhuri Kapa Haka Rāmere: 06/06 Tātai Kura
7	Rāhina: 09/06 Hangarau Tau 7/8 Rāpare: 12/06 Ngā Māhuri Kapa Haka Rāmere: 13/06 Tātai Kura
8	Rāapa: 18/06 Pō Puanga Matariki: Māketete 5pm Rāpare: 19/06 Ngā Māhuri Kapa Haka Rāpare: 19/06 Tātai Kura Rāmere: 20/06 Rā Matariki
9	Rāhina: 23/06 Hangarau Tau 7/8 Rāpare: 26/06 Ngā Māhuri Kapa Haka Rāmere: 27/06 Rā Mutunga



TE RANGI ĀNIWANIWA KURA TEINA

28 TĪKAKA MUTURANGI - 16 URU WHENUA 2025



Te whakaeke o Kura Teina ki te ātamira whakamaumahara i ngā hōia ki Kaitāia.

Tau ana ngā akoranga pēnei, he wheako, he kaupapa e tika ana kia akona e ngā tauira o tō tātou kura.



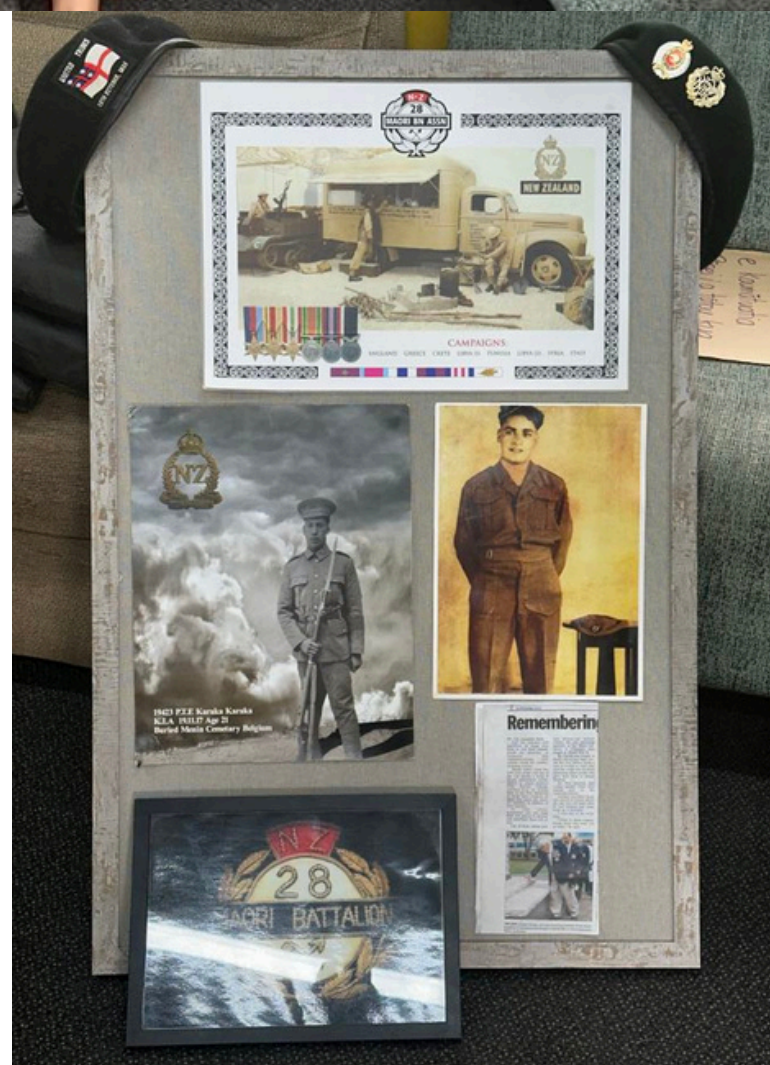
'Tamaiti akona ki te Kura Kaupapa tau ana ki te ao, tau ana!'

Ngā tohu whakamaumahara ki ngā hōia, e mihi ana ki ngā kaumātua kuia i tae mai te kōrero tahi i ngā pūrākau tuku iho, ka tangi te ngākau!



I tau marika te noho o ngā tauira te whakarongo ki ngā wheako.

Horekau akoranga tū atu i ngā momo whakaahua pēnei te hohonu, tau mai ngā taonga o wēnei hōia ki roto o Kura Teina.



Waimarie katoa ngā tamariki te rongō i te wairua o wēnei kōrero tuku iho, he mētara, he kākahu hōia, he pōtae, he whakaahua. Tēnā koutou e ngā rangatira.

Nā, i tunua ngā pihikete ANZAC e ngā tauira o Takawaenga hei whakanoa i te kaupapa nei. Mahi tika ana koutou!





TE RANGI ĀNIWANIWA KURA TEINA

28 TĪKAKA MUTURANGI - 16 URU WHENUA 2025



Te Ahurea o Te Tai Tokerau



TUAKANA TEINA

Karanga mai Te Hokianga Nui a Kupe, haramai te rangatira o ngā kapa i tū atu ki te tautoko i te Ahurea 50 o Te Tai Tokerau! I tae atu he kāhui nō Kura Teina te tautoko i te Wharekura, tau ana te tū o ngā tuakana! Ka rongo, ka tangi, ka hari, ka koa! E ao te whakarauora mai i ngā waiata o mua, inā te rerehua.





TE RANGI ĀNIWANIWA KURA TUAKANA

28 TĪKAKA MUTURANGI - 16 URU WHENUA 2025



MARAU Ā KURA
KIA KAHA RĀ E TE WHĀNAU!

KAUHOE - POITŪKOHU -
POITARAWHITI - HĀKINAKINA -
HANGARAU



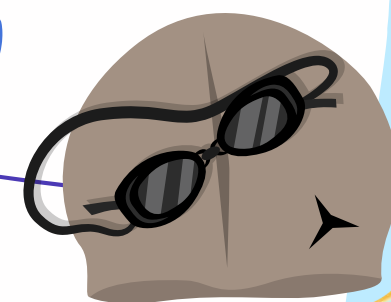
**TAUTOKO
ATU!
TAUTOKO
MAI!**

Tēnā, kia kaha te whakarite i ngā
kākahu me ngā rauemi tika o te kura!

Kākahu kura - kia tika ia rā!

Kākahu kauhoe, mōhiti, pōtae, tāwera

Kākahu hākinakina, pātara wai





TE RANGI ĀNIWANIWA KURA TUAKANA - KAPA HAKA

28 TĪKAKA MUTURANGI - 16 URU WĒNUA 2025



PAEROA KAPA HAKA - NGĀ MĀHURI 2025

Term 2 Weeks:	Dates:	Kaupapa:
Week 1	Mon 28th Apr - Fri 2nd May	Thursday 9:30am - 12:30pm
Week 2	Mon 5th - Fri 9th May	Thursday 9:30am - 12:30pm
Week 3	Mon 12th - Fri 16th May	NO TRAINING - Papa Chris, Wellington
Week 4	Mon 19th - Fri 23rd May	Thursday 9:30am - 12:30pm
Week 5	Mon 26th - Fri 30th May	Thursday 9:30am - 12:30pm
Week 6	Mon 2nd - Fri 6th June	Thursday 9:30am - 12:30pm
Week 7	Mon 9th - Fri 13th June	Thursday 9:30am - 12:30pm
Week 8	Mon 16th - Fri 20th June	Thursday 9:30am - 12:30pm
Week 9	Mon 23rd - Fri 27th June	Thursday 9:30am - 12:30pm

NGĀ MĀHURI 2025 KI

WHAKATAETAE KAPA HAKA Ā-MOTU



MATAATUA

1/11/25	RĀHOROI 1 NOEMA	WEHE I KAITĀIA
2/11/25	RĀTAPU 2 NOEMA	PŌHIRI I NGĀ KAPA O TE MOTU
3/11/25	RĀHINA 3 NOEMA	12:20PM TE TŪ O NGĀ MĀHURI

MERCURY BAYPARK TAURANGA
81 TRUMAN LANE, MOUNT MAUNGANUI 3152

KURA OFFICE 406 7677 TE PUNAWAI-ORA 406 7063 TE RANGI ĀNIWANIWA



TE RANGI ĀNIWANIWA WHAREKURA

28 TĪKAKA MUTURANGI - 16 URU WHENUA 2025



WĀHANGA 1/2 - 2025

HAKINAKINA

5.10 HE MEA TINO NUI TE WAHI AKO HEI WHAKAOHOHO I TE WAIRUA O TE TAMAITI KI ANA MAHI WHAKAAKO. NO REIRA, KIA KIKII TONU TE KURA I NGA MEA WHAKAIHIHI I A IA, I NGA MEA PUPURI HOKI I TE HA O TE AO MAORI. ME WHAKAWHANUI HOKI TONA WAHI AKO KI NGA MARAE, KI NGA NGAHERE, KI WAENGA PARAE, KI TE TAHA MOANA, KI NGA WHAREPUKAPUKA, WHARE TAONGA ME ERA ATU WHARE WHANGAI I TE PUNA O TE MOHIO



NGĀ WHAKATAETAE WAKA AMA KURA TUARUA Ā-MOTU LAKE TIKITAPU - ROTORUA 2025

E mihi ana ki ēnei o ngā tauria i tae atu ki roto o Te Arawa Waka i pakanga atu ai ki ngā kura tuarua o te motu. Ko Niwa Tiare J19 taitamawāhine, Ko Niwa iroaM J16 taitamatāne, ko Niwa BRoncos J19 taitamatāne. A Niwa Tiare i riro i te mētara koura mō tō rātou rēhi 250m. Ki te roopu haurua i riro i te mētaha hiriwa mō te rēhi 250m anoki. Autaia tauria mā!

JSC - POITŪKOHU KAITAIA KI WHANGANUI

E mihi nui ana ki a mātou tauria i tae atu ki ngā whakatatae Waka Ama, Poitūkohu i ngā hārarei! Kei whea mai!!



LONG DISTANCE NATIONALS

KAITAIA KI PŌNEKE



KURA OFFICE 406 7677

TE PUNAWAI-ORA 406 7063

TE RANGI ĀNIWANIWA



TE RANGI ĀNIWANIWA WHAREKURA

28 TĪKAKA MUTURANGI - 16 URU WHENUA 2025



WĀHANGA 2 - 2025

NGĀ RĀ MATUA

WIKI 1:

- 28 APERIRA - RĀ TĪMATANGA
- 28 APERIRA - HAINATANGA O TE TIRITI KI TE AHU
- WHAKATAU MŌ ERO

WIKI 2:

- 7 MEI - HUI WHĀNAU
- 8 MEI - NOHO PŌ KAPA HAKA
- 9 MEI - RĀ KAPA HAKA

WIKI 3:

- 15 MEI - NOHO PŌ KAPA HAKA
- 16 MEI - RĀ KAPA HAKA

WIKI 4:

- 19-23 MEI - TAU11 & TAU13 - IMOKO HAERENGA KI TAMAKI
- 22 MEI - NOHO PŌ KAPA HAKA
- 23 MEI - RĀ KAPA HAKA

WIKI 5:

- 29 MEI - NOHO PŌ KAPA HAKA
- 30 MEI - RĀ KAPA HAKA

WIKI 6:

- 4- 6 HUNE - NGĀ MANU KŌRERO KI POMPALLIER CATHOLIC COLLEGE

WIKI 7:

- 12 & 13 HUNE - RĀ KAPA HAKA

WIKI 8:

- 19 HUNE - NOHO PŌ KAPA HAKA
- 20 HUNE - RĀ KAPA HAKA
- 20 HUNE - MANAWATIA Ā MATARIKI

WIKI 9:

- 24 HUNE - MATARIKI KI O RAHI GAMES - TAIPA
- 25 HUNE - RĀ HĀKINAKINA ME PUKEMARO
- 26 HUNE - HAUORA TAIWHENUA KURA VISIT
- 26 HUNE - NOHO PŌ KAPA HAKA
- 27 HUNE - RĀ KAPA HAKA
- 27 HUNE - RĀ MUTUNGA O TE WĀHANGA



TE RANGI ĀNIWANIWA WHAREKURA

28 TĪKAKA MUTURANGI - 16 URU WHENUA 2025



NGĀ AROMATAWAI MŌ TE WĀHANGA / TERM 2 ASSESSMENT SCHEDULE

MARAUTANGA MĀORI

Marau	Tau / Taumata	Aromatawai	ō-roto / ō-waho	Te Rā Oti	Te Rā Oti (extension)
Te Reo Māori	Tau 9 - Taumata 1	AS92092 AS92093	ō-roto	Hurāe 4	Hurāe 11
	Tau 10 - Taumata 2	AS91285	ō-roto	Hurāe 4	Hurāe 11
	Tau 11 - Taumata 3	AS91651	ō-roto	Hurāe 4	Hurāe 11
Te Reo Rangatira	Tau 12 - Taumata 2	AS91782	ō-roto	Hurāe 4	Hurāe 11
	Tau 13 - Taumata 3	AS91807 AS91803	ō-roto	Hurāe 4	Hurāe 11
Tikanga ā Iwi	Tau 9 - Taumata 1	AS92079 AS92080	ō-roto ā-roto	Hurāe 4	Hurāe 11
	Tau 10 - Taumata 2	AS91762	ō-roto	Hurāe 4	Hurāe 11
	Tau 11 - Taumata 3	AS91832	ō-roto	Hurāe 4	Hurāe 11
Te Ao Haka	Tau 11 - Taumata 1	AS91977	ō-roto	Hurāe 11	Hurāe 18
	Tau 12 - Taumata 2	AS91981	ō-roto	Hurāe 11	Hurāe 18
	Tau 13 - Taumata 3	AS91985	ō-roto	Hurāe 11	Hurāe 18

MARAUTANGA WHĀNUI

Marau	Tau / Taumata	Aromatawai	ō-roto / ō-waho	Te Rā Oti	Te Rā Oti (extension)
Pūtaiao	Tau 11 - Taumata 1	AS92021	ō-roto	Mei 28	Hurāe 11
	Tau 12 - Taumata 2 (Matū)	AS91163	ō-roto	Mei 29	Hurāe 11
	Tau 12-Taumata 2 (Koiora)	AS91155	ō-roto	Hurāe 20	Hurāe 03
	Tau 13 - Taumata 3 (Matū)	AS91389	ō-roto	Mei 30	Hurāe 11
	Tau 13 - Taumata 3 (Koiora)	AS91607	ō-roto	Hurāe 21	Hurāe 03
Pāngarau	Tau 10 - Taumata 1	AS91945	ō-roto	Hurāe 20	Hurāe 27
	Taumata 2	AS91256 AS91259			
	Tau 11 - Taumata 2 Taumata 3	AS91256 AS91259 AS919581	ō-roto	Hurāe 20	Hurāe 27
	Tau 12 - Taumata 3	AS919581	ō-roto	Hurāe 20	Hurāe 27
Hauora	Tau 13 - Taumata 3	AS919581	ō-roto	Hurāe 20	Hurāe 27
	Tau 11 - Taumata 1	AS92057	ō-roto	Hurāe 11	Hurāe 18
	Tau 12 - Taumata 2	AS91793	ō-roto	Hurāe 11	Hurāe 18
	Tau 13 - Taumata 3	AS91815	ō-roto	Hurāe 11	Hurāe 18



TE RANGI ĀNIWANIWA WHAREKURA

28 TĪKAKA MUTURANGI - 16 URU WHENUA 2025



KAIKO PAPAKAINGA 2025

Mataora

TAU 9



WHAEA KARA & PAPA SAM

Te Rangi Tamaku

TAU 10



WHAEA FETUAO & WHAEA SANDRA

Tiimatanginui

TAU 11



WHAEA DELANIE & WHAEA PAANE

Hui e

TAU 12



PAPA PENE & WHAEA NAZRA

Taiki e

TAU 13



WHAEA TIA & PAPA RAWIRI

MATANGARO / PĀNUI

MENA HE KARERE TĀU MŌ TŌ TAMAITI, E HIAHIA RĀNEI KI TE TUKU
KARERE KI TŌ TAMAITI WHAKAPĀ MAI KI NGĀ KAIKO PAPAKAINGA



TE RANGI ĀNIWANIWA WHAREKURA

28 TĪKAKA MUTURANGI - 16 URU WHENUA 2025



PAEROA KAPA HAKA 2025

Term 2 Weeks:	Dates:	Kaupapa:	Kai:
Week 1	Mon 28th Apr - Fri 2nd May	Kura Haka Weds 30th - Fri 2nd May DAY PRACTICES	KOKA/ Kaiako
Week 2	Mon 5th - Fri 9th May	Thursday overnight - NOHO	Matawhero
Week 3	Mon 12th - Fri 16th May	Thursday overnight - NOHO	Aparangi
Week 4	Mon 19th - Fri 23rd May	Thursday overnight - NOHO	Pareārau
Week 5	Mon 26th - Fri 30th May	Thursday overnight - NOHO	Meretū
Week 6	Mon 2nd - Fri 6th June	Ngā Manu Kōrero Regionals *Wednesday 4th - Friday 6th June NO KAPA HAKA	
Week 7	Mon 9th - Fri 13th June	Thursday DAY Practice Thursday overnight - NOHO	Matawhero
Week 8	Mon 16th - Fri 20th June	Thursday overnight - NOHO	Aparangi
Week 9	Mon 23rd - Fri 27th June	Thursday overnight - NOHO	Pareārau



TE RANGI ĀNIWANIWA WHAREKURA

28 TĪKAKA MUTURANGI - 16 URU WHENUA 2025



WĀHANGA 2 - 2025

WĀHANGA 2 KĀKAHU KURA 2025



KĀKAHU KURA

Kākahu kura - Wāhanga 2 (Hōtoke)

- Tihāte kura
- Tarau poto/roa taitama - pukepoto te tae (Warewhare)
- Panekoti kōhine - pukepoto te tae (Warewhare)
- Hū rōmana - pango te tae (Warewhare)
- Hū ōkawa - pango te tae (Warewhare)
- Poraka kura - pukepoto te tae (Warewhare)

KĀKAHU ŌKAWA

Kākahu Ōkawa - Tau kura 2025

- Panekoti ōkawa kōhine - pango te tae (Warewhare)
- Tarau roa ōkawa taitama - pango te tae (Hoko mai i te kura)
- Tōkena roa kōhine - pango te tae (Warewhare)
- Hū ōkawa taitama - pango te tae (Warewhare)
- Hū ōkawa kōhine - pango te tae (Warewhare)
- Hāte ōkawa - ōrangitea te tae (Hoko mai i te kura)
- Kahupeka & neke-tae (Mā te kura ēnei e pupuri - kāore he take mo te hoko)





“KIA TŪ TE ĀO MĀORI”

TE WĀNANGA O TE RANGI ĀNIWANIWA

KIA TŪ MOTUHAKE TE AO MĀORI
10 PŪTOKINUI Ā TAU - 28 PŪTOKI NUI Ā TAU 2025



NGĀ WHĀINGA

TO SUPPORT YR 12-13 IAUIRA TO GAIN NCEA 3
TRADES & UNIVERSITY ENTRANCE

WĀHANGA 2

WIKI 2

8/5 Hauora Academy

WIKI 3

**13/5 Careers Roadshow Kaitaia
15/5 Hauora Academy**

WIKI 4

**19-23/5 - He Takere Waka Nui Tau 11-13
Haerenga ki Tamakimakaurau Careers**

WIKI 5

29/5 Hauora Career Forum Te Ahu

WIKI 6

5/6 Hauora Academy

23-25/6 Drivers Learners @ REAP tbc



Te Wānanga
ext 4



Te Wānanga o
Te Rangi Āniwaniwa





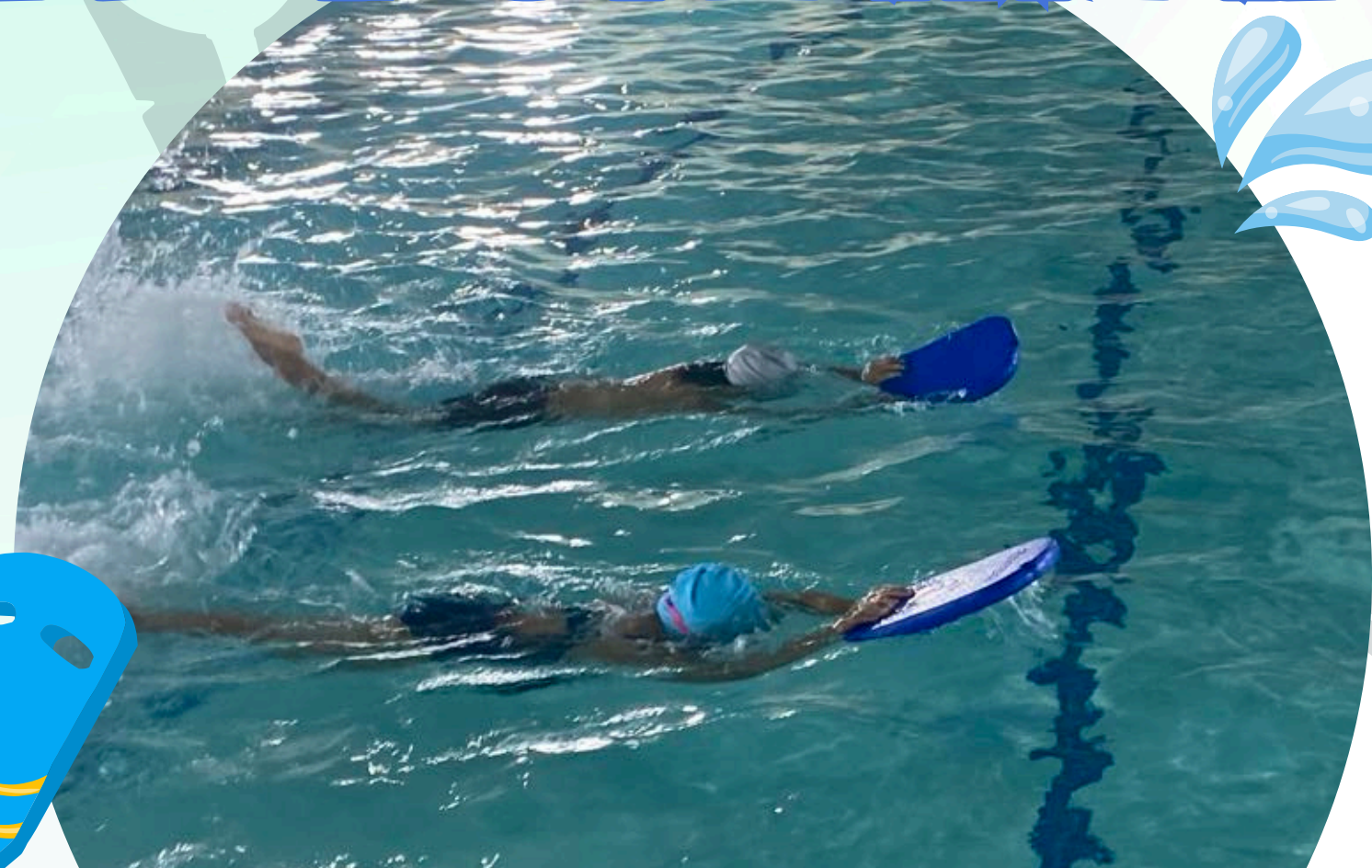
TE RANGI ĀNIWANIWA TE PUNAWAI-ORA

28 TĪKAKA MUTURANGI - 16 URU WHENUA 2025



April 28th, 2025. I tūwhera ano Te Punawai o Te Rangī Āniwaniwa i te rā tuatahi o wāhanga 2. Taurira & kaiako blessed the reopening of the 22 year old heated swimming pool Te Punawai during lunchtime at the start of term 2.

KUA PUARE TE PUNAWAI



Special thanks to our local contractors Outer Realm who completed all their mahi by set date and who have given another 20-25 years extra life to Te Punawai.

Kia ora also to Lotteries Community Facilities for providing 66% of the funds, and Oxford Trust for \$5,000 donation. In the last year, the interior has been repainted and gutters have been renewed.

We are grateful for the facilities and its need to help students and other clubs to develop their swimming skills.

WHAKAPĀ MAI KI A MANUERA RIWAI

WAEA: (09) 406-7063

ĪMĒRA: PUNAWAIORA@ANIWANIWA.SCHOOL.NZ

PUKAMATA: [HTTPS://WWW.FACEBOOK.COM/TE-PUNAWAI-ORA-340189082725576](https://www.facebook.com/te-punawai-ora-340189082725576)

