



TE RANGI ĀNIWANIWA KURA PĀNUI



RĀHINA 16 / PŪTOKI NUI Ā TAU / WIKI 4-6 2026

TAKU KŌPERE E ĀNIWANIWA I TE RANGI, TĀWHANA KAU ANA I RUNGA I NGĀ MARAMARA O MURIWHENUA. WHĀIA TE TINO RANGATIRATANGA ME TE MANA MOTUHAKE

Kaupapa Matua:

- **KT: WIKI 8 - Swimming Zone - Dargaville**
- **KT & WK: WIKI 9 - Te Ahurea o Te Tai Tokerau**
- **Rātu: 14/4 HUI POARI**
- **Tau 7/8: Hangarau ki K.I.S - Wiki 7,9**
- **WK: Pūmanawa - la Mane & Wenerei (P5-6)**
- **WK: NZSS Waka Ama ki Rotorua - Wiki 8)**
- **KURA KATOA: Rā Whakamutunga - Rāmere 17 o Tikākā Muturangi**

Ngā Whārangi:

- 1 TUMUAKI
- 2 WHĀNAU
- 3 KURA TEINA
- 4 KURA TAKAWAENGA
- 5 WHAREKURA
- 6 WĀNANGA

- **NGĀ KAUPAPA RANGATIRA WHAKANUIA KĀ TIKA!**
- **PŪKANA PRODUCTIONS**
- **MANA AKE - TE RŪNANGA O TE RARAWA**
- **CENTRAL ZONE KAUIHOE**
- **PŪMANAWA**
- **AKO WAIATA - TE AHUREI O TTT**
- **WAKA AMA**
- **KAIRIWHI O TE KURA**
- **▲ NGĀ KAUPAPA MATUA (WIKI 7)**
- **TAU 1-3**
- **PŪMANAWA**
- **HAERENGA KI MĀHEATAI (MAHI MĀTAITAI) KT KATOA.**
- **MANA AKE - ANGA WHAKAMUA: (MĀUI)**
- **KAPA HAKA 1:10PM-2:20PM KURA KATOA**
- **TAU 4-5 MĀUI / TAU 6-7**
- **TE HIKU ZONE KAUIHOE - SPORTS HUB**
- **PŪMANAWA**
- **HAERENGA KI MĀHEATAI (MAHI MĀTAITAI) KT KATOA**
- **MANA AKE - ANGA WHAKAMUA: (MĀUI)**
- **KAPA HAKA 1:10PM-2:20PM KURA KATOA**
- **TAU 8-13**
- **PŪMANAWA**
- **WAKA AMA LAKE NGATU**
- **HE TAKERE WAKA NUI WANANGA TAU 11,12,13 KI TE AHU**
- **SPORTS LEADERSHIP WANANGA**
- **HAUORA ACADEMY TAU 12 WITH WHAEA CALLIE**
- **TAU 13 TE AHU WHARE PUKAPUKA**
- **KAPA HAKA 1:10PM-2:20PM KURA KATOA**



E NGĀ AKA O TE AHO MATUA,
E NGĀ TAKIAHO O MURIWHENUA,
E NGĀ AU KAHĀ O TŌ TĀTOU KAUPAPA
RANGATIRA
O TE TINO RANGATIRATANGA,
O TE RANGI ĀNIWANIWA,
TĒNEI RĀ TE MIHI!



TE RANGI ĀNIWANIWA KURA TEINA



RĀHINA 16 / PŪTOKI NUI Ā TAU / WIKI 4-6 2026



HE KĀKANO

HE KĀKANO I RUIA MAI I RANGIĀTEA, E KORE IA E NGARO

E ao te mahi ngātahi, te whakatō kākano, te mahi toi me te whakarākei ipu putiputi



POUNAMU

AHAKOA ITI
HE ITI MAPIHI POUNAMU

E ao hoki te āhuareka o te ako ngātahi a ngā teina me ōna tuākana.



E WHANAKE ANA TE REO
PĀNOI METEREO Ā WAHA
O ĒNEI TAUIRA

MURIWAI

Hari Huritau

Zeni-Hira

PŪKANA

KA NUI TE HARIKOA O NGĀ TAMARIKI TĒTAKI I TE PEPEHĀ
ME NGĀ WAIATA O TE KURA



He tūpioke, nō Rangauru, he au tonu



Ngā toki kaikauhoe



TE RANGI ĀNIWANIWA KURA TUAKANA / KURA TAKAWAENGA

RĀHINA 16 / PŪTOKI NUI Ā TAU / WIKI 4-6 2026



HE WAKA EKE NOA

Ko te moana te kaupapa ako. E kōkiri ana tēnei kaupapa i roto i ngā wāhanga marau pērā i te Pānui, te Tuhituhi, me te Pāngarau (Meka Matua). Kua whai wheako hoki ngā ākonga ki ngā pūmanawa pērā i te Mau Rākau, te Waka Ama, te Taiao, te Tunu Kai, me te Korikori Tinana.



TE WAI ONEPŪ

HE ITI PĪOKE NŌ RANGAUNU HE AU TŌNA



MEINATA

KO TŌKU REO TŌKU OHOHO



MĀUI

TAMA TŪ, TAMA ORA



TE TINO UARATANGA

6.10 Kia puawai tōna waiora me tōna hauora i roto i te hono tāngaengae o tōna wairua me tōna tinana.



TE KURA TAKAWAENGA

KO TE PIKO O TE MĀHURI, TĒRĀ TE TUHU O TE RĀKAU



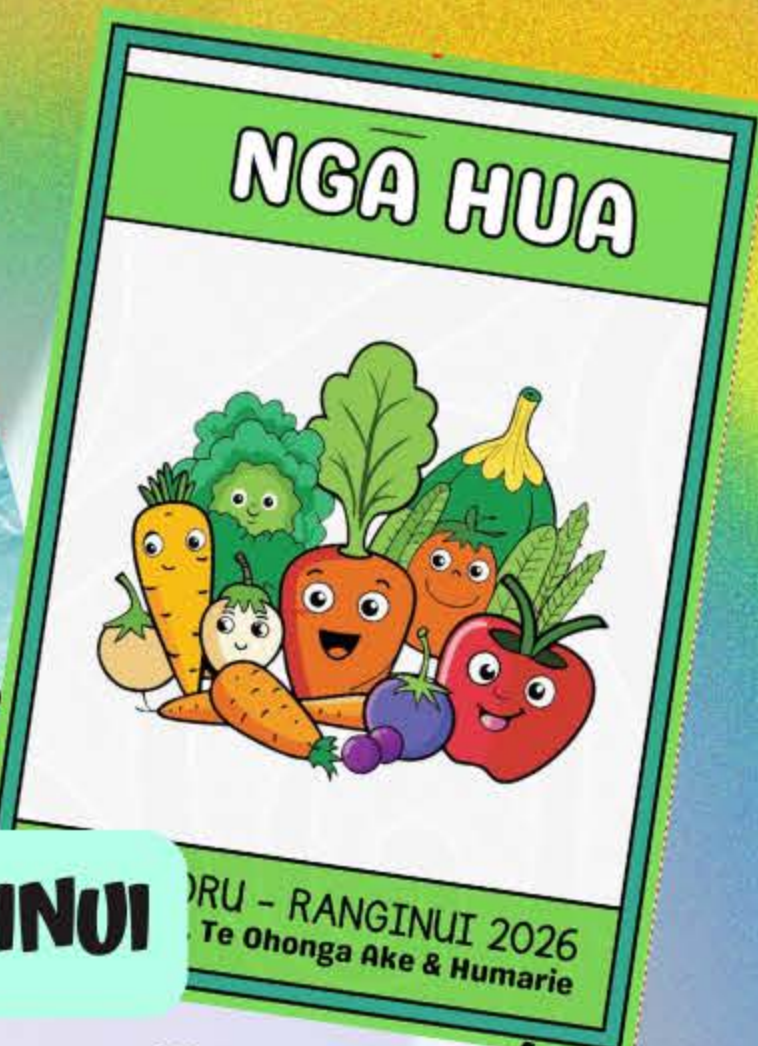


TE RANGI ĀNIWANIWA WHAREKURA

RĀHINA 16 / PŪTOKI NUI Ā TAU / WIKI 4-6 2026



AKORANGA Tikanga ā Iwi



RANGINUI - RANGINUI 2026
Te Ohonga Ake & Humarie

E ako ana i te moteatea Rimurimu hei akoranga whakakii kete waiata. Ko te whāinga mō te wāhanga kia hanga he kemu ako Reo Māori.


Whakapapa o te mōteatea "Uia te Pātai"

He momo waiata tēnei e whakamahara ana i a mātou ngā hua o Ngāpuhi ki tō tātou takenga mai, nā te mea he whakapapa hōhonu kei roto i ngā kupu o te mōteatea nei.

Ko te tīmatanga o Ngāpuhi kei te moenga o Tauramoko, ka puta ko Te Hauangiangi, Nā Te Hauangiangi i heke mai ia Pūhi, ā, nā Tauramoko i heke mai a Nukutawhiti. A, i reira i uia te pātai: "Ko wai ahau?" He pātai e whakakotahi ana i te tuakiri me ngā tūpuna, ā e whakaatu ana te hira o ngā tūpuna i roto i ngā kupu o te waiata.

koinei he tapiri korero na matua Hone Sadler, ka moe a Tauramoko i a Tuwahine Hotehene, ka puta ko Te Hauangiangi, ka puta ki mua ko Tangaroa-whakamanamana, ka rere ki muri ko Rāhiri, ka rere ki muri ko Māui, ā, ka rere ki muri ko Puna-te-ariari, te tuahine o Rāhiri. Otira ahakoa ehara a Rāhiri i te tuakana, ko ia tonu te tupuna matua o Ngāpuhi.

"kaore e taea te karo i te whakapapa". (PATAI 3)



MATAORA

E whakamahi ana ngā taurira i ngā waea pūkoro ki te hanga whitiata rangahau mō tētahi moteatea kua whiria e rātou. E tatari tonu mō ngā rororhiko, ka mutu e raru ana te ahokore.

TE RANGITAMAKU

E wetewete tonu ana tātou i ngā momo Kaupapa Torangapū. E tuki ana i ngā hukihuki Tuhinga Roa mō o rātou kaupapa Torangapū.

Te Tairaru Whiwhi Whare

He moepapa kino e pāngia e te iwi Māori, he raru nui e whanake haere ana ki roto o Aotearoa. Ko tēnei take tōrangapū ko te tairaru whiwhi whare, kua pēnei nā te tokoiti o ngā whare hei wāhi noho. E ai ki ngā tātauranga a Te Tūāpapa Kura Kāinga, nui ake i te 102 mano o ngā tangata Māori e pēhi kino ana i te kāinga kore. Ko tēnei te hunga ka noho ki ngā motokā, ki ngā tiriti. Ngā whare noho taupua, ngā mōtera, ngā whare kua piri ai ngā whānau, ka mutu ko ngā wāhi kahore e noho ana ki te taumata hei wāhi pai ki te noho.

Kua whakawehea ahau i ōku kōrero ki ngā wāhanga e toru, kia mārama pū te kaipānui ki tēnei kaupapa e ngau kino nei i a tātou. Ko te ihu o tōku waka kōrero, ka whakawaha ahau i ngā kōrero kua puta mai ki roto i te whare paremata. Ka hunuku ai ki te waenga o tōku waka, ka kōrerotia mō te pire i tūtohu e Oriini Kaipara. Ko te kei o tōku waka, ka whakamārama i ngā mea ka pāngia ki ngā whānau e pēhi nei ki ēnei āhuatanga, ā, ka kōrero mo tō tātou anamata ina kore whakatika i tēnei mea te kāinga kore.

TITIMATANGINUI

NGĀ KKM

Ko ngā Kura Kaupapa Māori o Aotearoa te oranga o te reo i ēnei rā, ko ēnei kura e whakaako ana i ngā mātauranga tuku iho mai i ngā mātua tupuna ki ngā rangatahi, ā, ki ngā rangatira o apōpō.





Kua whakaroopuu ki te whakaatu i ngā rangahau kaupapa Taukiri Maori - te whakamarama i ēnei āhuatanga otirā te whaimāramatanga ki ēnei tikanga.



TE RANGI ĀNIWANIWA WHAREKURA

RĀHINA 16 / PŪTOKI NUI Ā TAU / WIKI 4-6 2026



Ngā maki whakahirahira o **WHAREKURA**



KURA OFFICE 406 7677

TE PUNAWAI-ORA 406 7063

TE RANGI ĀNIWANIWA



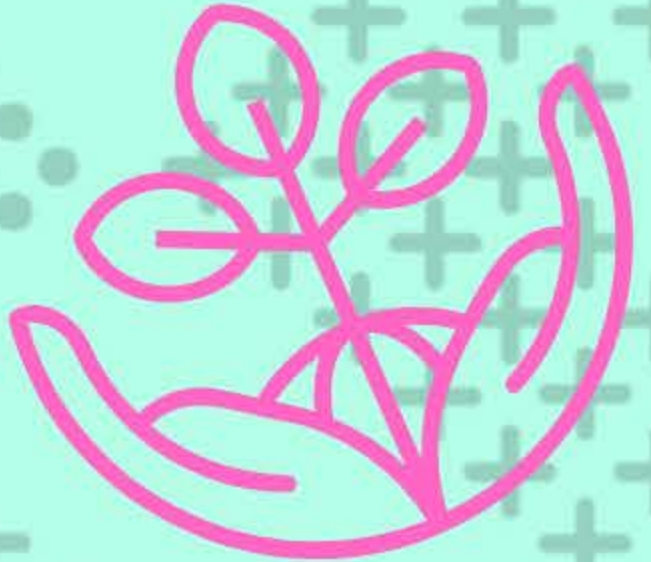
TE WĀNANGA O
TE RANGI ĀNIWANIWA
KIA TŪ MOTUHAKE TE AO MĀORI



RĀHINA 16 / PŪTOKI NUI Ā TAU / WIKI 4-6 2026

NGĀ WHĀINGA

TO SUPPORT YR 12-13 TAUIRA TO GAIN NCEA 3
TRADES & UNIVERSITY ENTRANCE.



PĪMANANA



ACADEMY



TE WĀNANGA O
TE RANGI ĀNIWANIWA
KIA TŪ MOTUHAKE TE AO MĀORI



RĀHINA 16 / PŪTOKI NUI Ā TAU / WIKI 4-6 2026

NGĀ WHĀINGA

TO SUPPORT YR 12-13 TAUIRA TO GAIN NCEA 3
TRADES & UNIVERSITY ENTRANCE.

WĀNANGA KEY DATES

17 MAEHE

HE TAKERE WAKA NUI TAU 11, 12, 13 KI TE AHU

19-20 MAEHE

SPORTS LEADERSHIP COURSE TAU 12-11
CREDITS

23,25,30 MAEHE

HOSPITALITY WITH WHAEA DESLEY

28 MAEHE

MAORI EDUCATION SCHOLARSHIPS DUE